



ASSASSIN'S
CREED
SHADOWS

CHARACTER REFERENCE GUIDE



WELCOME TO ASSASSIN'S CREED SHADOWS

We are incredibly excited to bring the highly anticipated setting of Feudal Japan to life through the eyes of our two unique protagonists: Naoe, a Shinobi of Japanese heritage, and Yasuke, an outsider on the path to becoming a legendary Samurai.

In the pages to come, you will discover more about these two heroes with unique backstories and skills, yet complement each other as their journeys come together. We hope this guide inspires you to create and embody these legendary heroes.

In the process of creation, we ask that you treat these characters without caricature or stereotype and the guide will point-out some best-practices to follow. When applying makeup, please use tones that match your current pigmentation and avoid attempting to match the skin color of the respective characters.

We thank you for your creativity and for your homage to these portrayals of characters in which we can all find a piece of ourselves reflected.

- The Assassin's Creed Team

日本に新たな信条が生まれる。

復讐から連帯へ、闇影から光明へ。





NAOE
THE SHINOBI

源三

YASUKE
THE SAMURAI





茶
緒
江

NAOE

Naoe is a young peasant from the remote mountains of Japan that were the origin of the legendary "ninja" of the era.

In her home of Iga, everyone was raised with the ability to fight and protect their home, values, and way of life. Naoe even more-so by her shinobi father. When each comes under attack and faces destruction, however, she begins a new chapter of her journey - one steeped in vengeance.





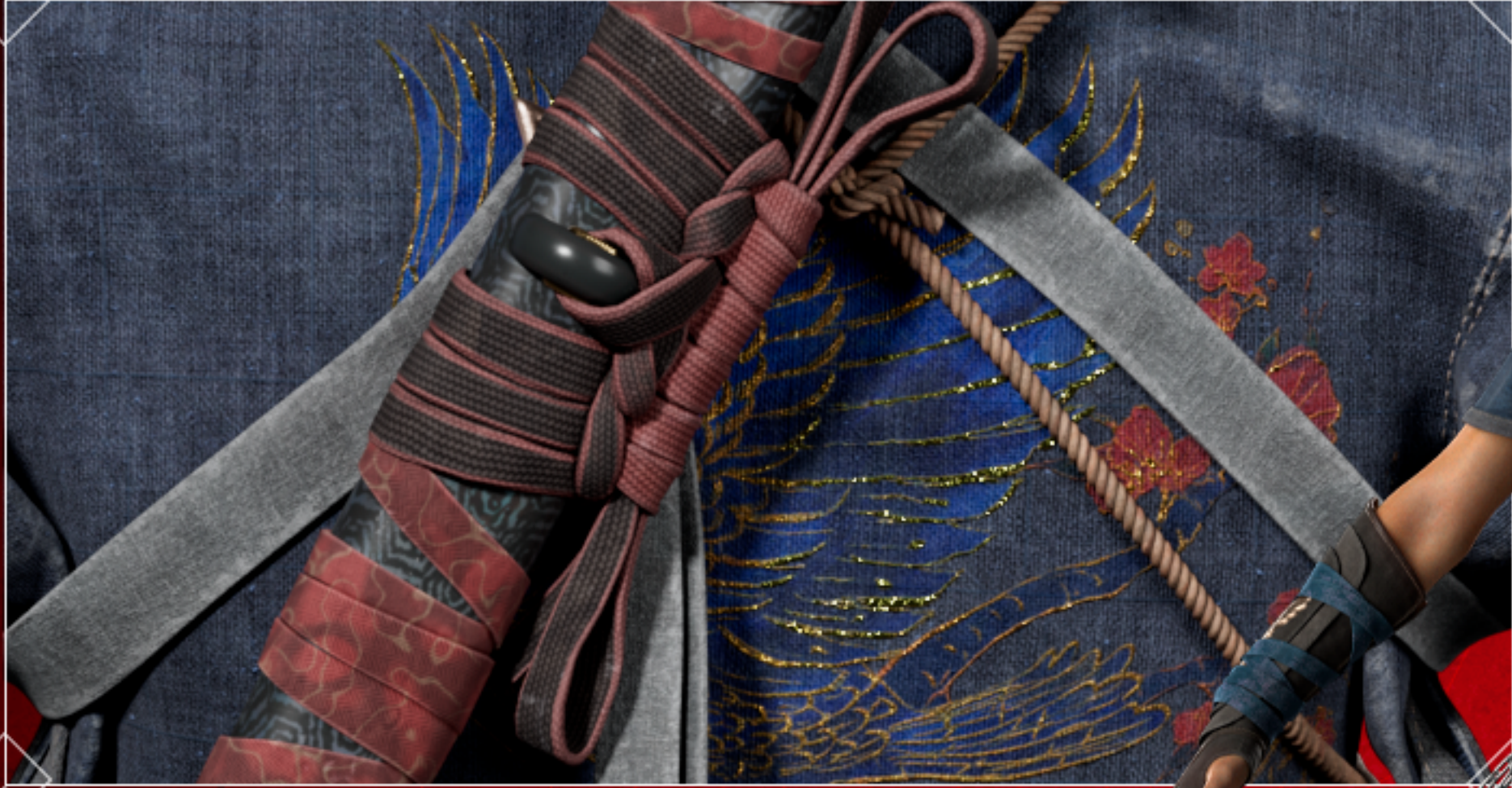
NAOE

The design of Naoe's outfit and equipment needed to thread the needle between two worlds; that of the renowned and feared ninja and the Assassin role she embodies. As a shinobi, Naoe wears a deep blue outfit, not black, with a kimono foundation (a cossodé) tied under the armpits in a more freeing style called a Tatsuki, all the better to fight or otherwise work with one's hands.



NAOE

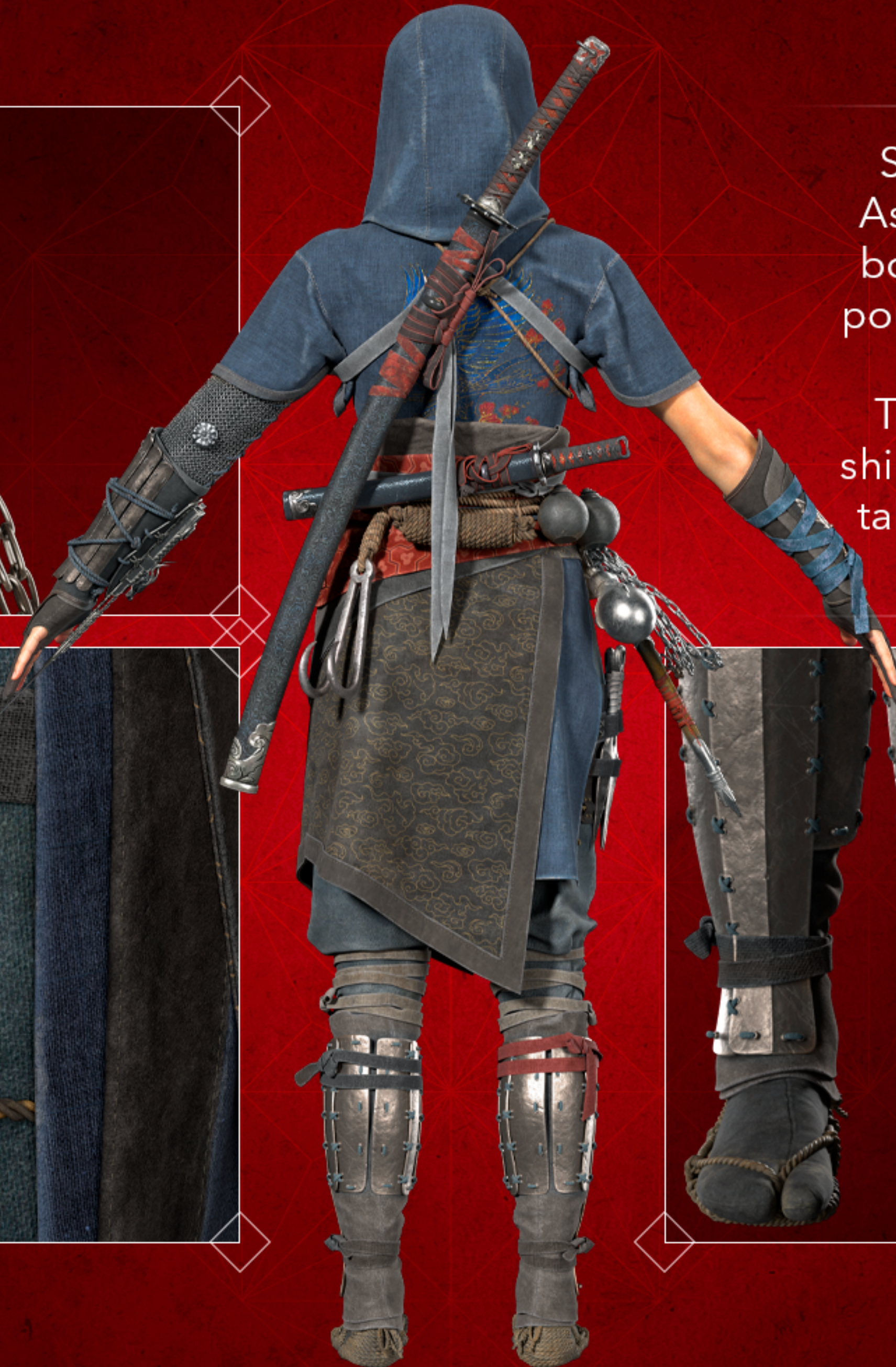
Naoe blends the elements of ninja and Assassin throughout her entire design, which can be seen in each element in part and in whole. As a new Assassin within the century-spanning Brotherhood, her design uses the motif of the eagle on the bracelet and back, metal decoration and historically inspired design, respectively. As well as an iconic touch of red despite the dark palette.



NAOE

She carries with her all the tools an Assassin of the era may need, smoke bombs, kunai, grappling hook, and a pouch for anything else she may need.

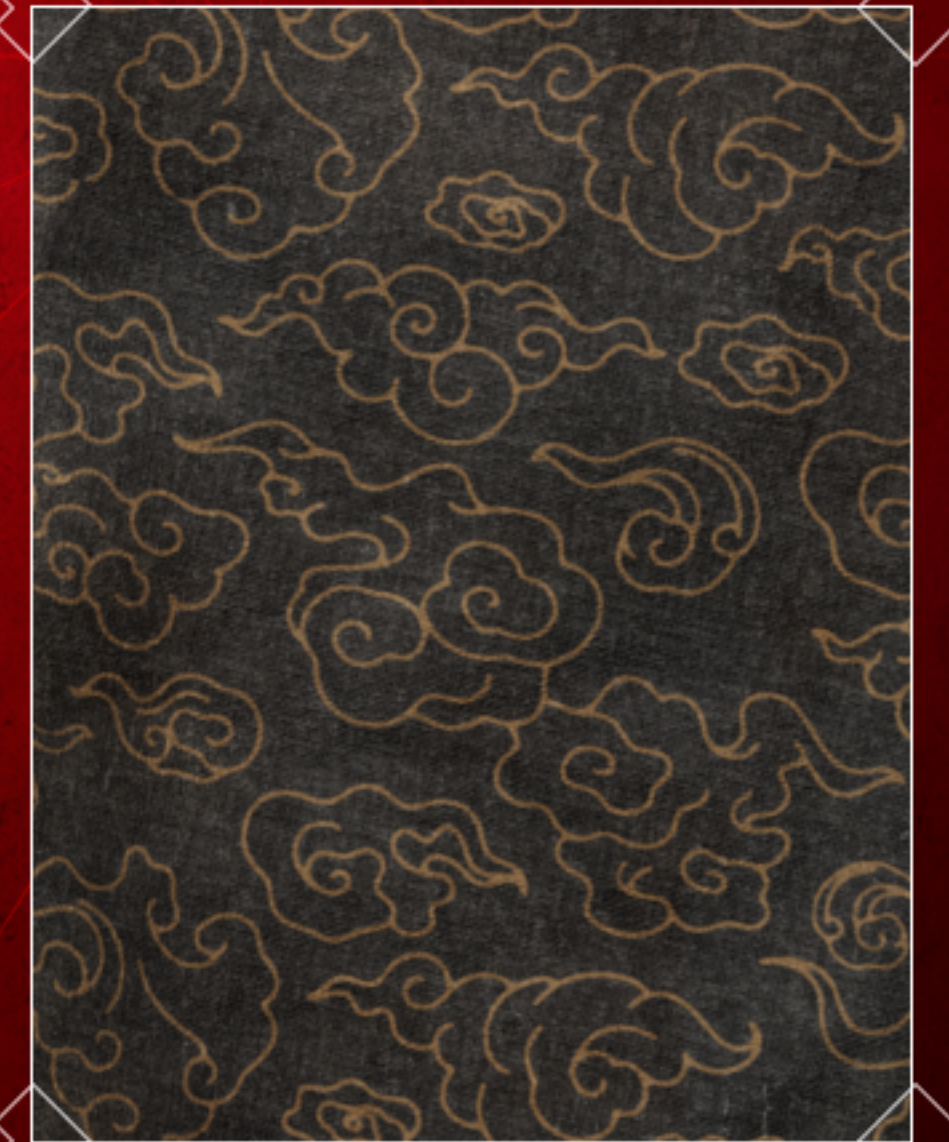
To further draw from her combined shinobi and samurai roots, Naoe wears tabi shoes, the instantly recognizable sandals over socks.



NAOE

Notice as well, her small but vital pieces of armor on her shins and forearms, a result of countless lessons in combat from her shinobi warrior father. She also carries a tsuba - the metal guard of a katana - tied across her shoulders, despite not wielding a traditional daito katana herself.

Cloud patterns as a cultural pattern can be seen throughout Naoe's tunic.





NAOE

Overall, she is lightly armored with the normally flowing portion of her kimono tied close under the arms, all to move around and parkour more freely.







NAOE

Naoe wields the hidden blade on her left wrist, as is tradition. Though her blade trades the iconography of the eagle for that of the dragon; along with its strength and determination. The blade itself is a gift from her father.

Unlike most other hidden blades, Naoe's can rotate 90 degrees in the palm of her hand, turning into a knife perfect for fast, aggressive strikes.





NAOE

Naoe also uses a tanto blade, a weapon similar to the katana but much shorter. Her hidden blade similarly can pivot to become a tanto-like dagger for angled strikes.

Much of Naoe's arsenal follows her outfit and gear visuals as well, with a high focus on silver and black/blue darker colors with a splash of iconic Assassin red among the shadows.



TSUBA
(stylized metal kata guard)



TANTO
(dagger)



NINJATO KATANA

SMOKE BOMBS

RED SASH

GRAPPLING HOOK

KUSARIGAMA
(kama, chain, and weighted ball)

KUNAI
(throwing knives)

WARAJI
(sandals)

TABI
(socks)





弥助

YASUKE

Yasuke is a storied warrior, with origins in Mozambique where he was taken as a slave before eventually arriving in Japan in service of Jesuit missionaries.

Much like the folded steel katana he comes to wield, Yasuke is resilient, honorable, and reliable, even as his troubled and painful past harden him against the world beyond.





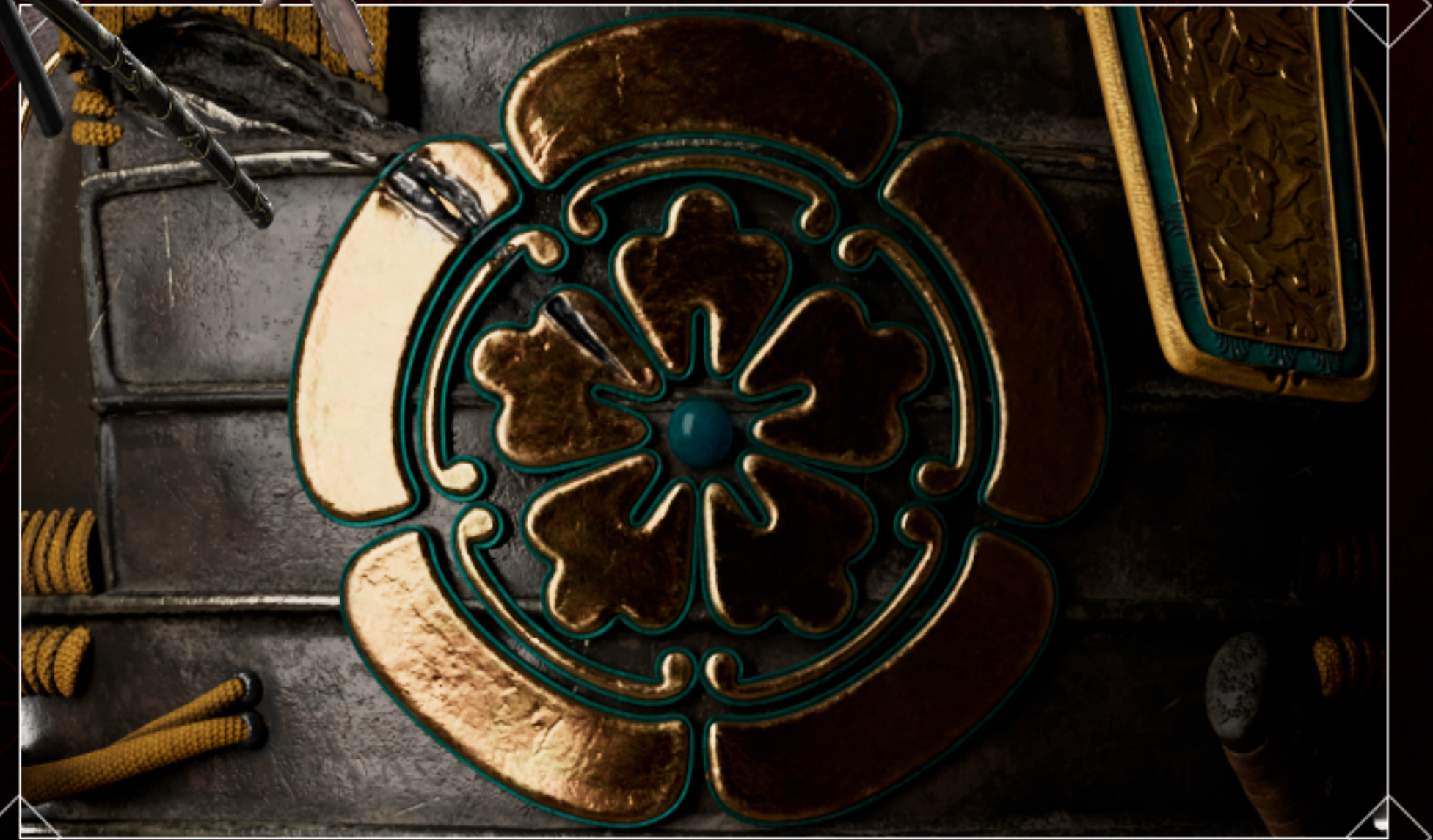
YASUKE

The design of Yasuke draws from several sources; his home, his ward, and his station. As such, his armor bears symbolic importance throughout. The pattern and color of his belt, the deep rusted orange, grounds Yasuke to his home country of Mozambique, and the bull horned helmet speaks to his boundless strength.



YASUKE

As for his ward, Yasuke, charged with protecting Oda Nobunaga, the powerful daimyo described as a dragon, wears symbols of Nobunaga's power from head to toe. The dragon and gold details speak to Nobunaga's power and wealth and influence during his reign of power. The flower that centers Yasuke's armor is itself a symbol of the Nobunaga clan.



YASUKE

From top to bottom, Yasuke is covered with richly colored plated metal armor. While it may look decorative, it serves the primary goal of keeping the wearer safe. Smaller pieces of armor such as the menpo, which provided face protection, and plates to protect the armpits are key pieces of samurai defenses.



YASUKE

Yasuke's back is also highly decorative, with a tree adorning the armor in an organic, flowing pattern below the sashimono, which would hold the daimyo's banner.

The Dragon motif appears throughout Yasuke's armor and arsenal, as a symbol of Oda Nobunaga's eminent power. There's no better way to proclaim one's strength than colorful legendary creatures.





YASUKE

Along with the gold detailing, these elements of Yasuke's design may not be fully historically accurate, but they help speak to the immense wealth of Oda Nobunaga during this period.







YASUKE

Yasuke's weaponry reflect his size and strength, with a full katana among other heavier weapons like clubs and polearms. His katana's guard - the tsuba - is styled after the crest of Nobunaga.





YASUKE

The Katana and the Wakizashi go hand in hand with a samurai. In addition to serving as weapons for different combat styles, they are also a symbol of their social status and samurai moral code.





YASUKE

Warriors and soldiers of the time also had access to firearms like the arquebus. Naturally, a samurai in the service of Oda Nobunaga like Yasuke will have a stylized weapon fitted with a dragon head decoration.

Throughout his weapons and armor, Yasuke is equipped with bright, prestigious regalia of gold and red - impactful colors during this period of Japan's history. He shines on the battlefield like the blazing sun.



MENPO

(face protection, not shown)

PLATED ARMOR

DAITO KATANA

SASHIMONO

(war banner holder)

**NOBUNAGA CLAN
CREST**

WAKIZASHI

(side-sword)



The background of the image is a dark, atmospheric scene from the game Assassin's Creed Shadows. It depicts a samurai in ornate armor standing in the center, holding a katana. To his right, a hooded assassin is perched on a stone lantern. The scene is set in a traditional Japanese garden with stone lanterns, a torii gate, and falling leaves under a full moon. The Assassin's Creed logo is prominently displayed in the center, with the title 'ASSASSIN'S CREEED SHADOWS' below it.

ASSASSIN'S
CREEED
SHADOWS

We hope you have enjoyed exploring the visuals, the history, and the details that have helped breathe life into Naoe and Yasuke. We hope to see your creativity and inspiration in action soon.

-The Assassin's Creed Shadows Development Team